



Cat® 928Hz

Ready Mix Loaders

The Cat® 928Hz Ready Mix Wheel Loader, equipped with heavy duty 3.5 yd³ Sand and Gravel bucket, Ready Mix counterweight package, and choice of L2, L3, L5 or 600 tires, is ideal for any ready mix or batch plant application. This high-performance machine optimizes power and productivity while being able to maneuver in tight conditions.

Operator Station

- Spacious and ergonomically designed cab
- Easy-to-use machine joystick controls

Hydraulic System

- Load-sensing features
- Fast loading cycles
- Exceptional ride control

Optional Rear View Camera System

- Work area visual enhancement system uses a closed circuit video monitoring system
- Objects can be viewed in a 7 in color LCD monitor located in place of the right cab view mirror

High Productivity

- A shorter wheelbase allows better maneuverability compared with competitors

Caterpillar Buckets

- Sand and Gravel bucket for handling Ready Mix aggregate material
- Side and bottom wear plates improve bucket life in highly abrasive materials
- Reversible, three-piece, bolt-on cutting edge for easy replacement and long life

Serviceability

- Convenient ground-level access to all major service points
- Gull-wing doors provide excellent engine access
- Swing-out fan simplifies radiator service

Owning and Operating Costs

- Extended service intervals
- Lower fuel consumption
- Faster cycle times

928Hz Ready Mix Loader Configuration

- 928Hz Wheel Loader
- 3.5 yd³ Pin On Sand and Gravel Bucket
- Ride Control
- Ready Mix Loader Counterweight Package
- Dustbowl Precleaner
- Alternator, 95 Amp Brushless
- Hydraulic Oil Cooler, Heavy Duty
- Cat® C6.6 Engine
 - Rated Net 149 hp, Max Net 160 hp
- Deluxe Cab
 - Air Conditioning
 - Exterior Mirrors
 - Flood Lights
 - Radio Ready
 - Sliding Glass Windows
 - Sun Screen and Sun Visor

Optional Selections

- Axles, Limited Slip Differentials Front or Rear
- Coolant, Extended Life –50° C
- Fan, Standard or Reversing
- Machine Security System
- Power train, Crankcase & Driveshaft Guards
- Other Additional Guarding
- Product Link
- Radiator, Regular or Wide Fin Spacing
- Radio, AM/FM with CD Player
- Rearview Camera System
- Seat, Comfort, adjustable air suspension, Contour or Fabric
- Starting Aid, Engine Coolant, 120 V
- Steering, secondary
- Tires, L2, L3, L5 or 600s
- Warning Beacon

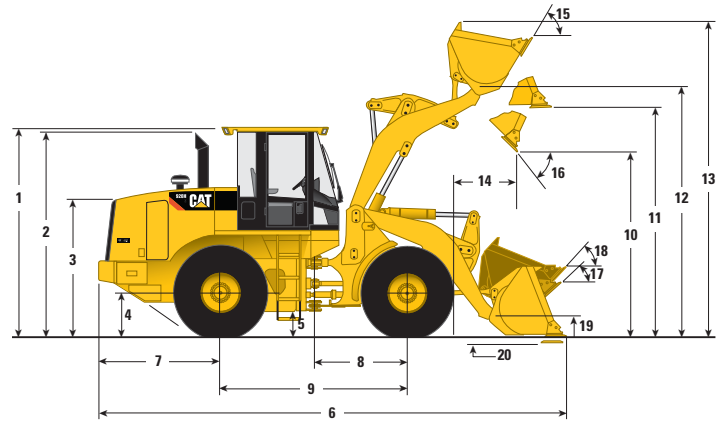
Cat Ready Mix Loaders

Specifications

Pin-On Bucket

Rated bucket capacity	2.7 m ³	3.53 yd ³
Rated load	4242 kg	9,353 lb
Bucket width	2621 mm	8 ft 7 in
Reach at 45° discharge and 2130 mm (7'10") clearance	1622 mm	5 ft 4 in
Reach with lift arms horizontal and bucket level	2425 mm	7 ft 11 in
Static tipping load straight	9835 kg	21,682 lb
Static tipping load full 40° turn	8485 kg	18,706 lb
Breakout force	8890 kg	19,599 lb
Operating weight	12 939 kg	28,526 lb

• Specs configured with L3 XHA Radial tires



3.5 yd³ Sand and Gravel bucket
with additional side and floor wear material



Additional Ready Mix counterweight package
to optimize stability and performance

Dimensions

1 Height to top of ROPS/FOPS	3269 mm	10 ft 9 in
2 Height to top of exhaust stack	3189 mm	10 ft 6 in
3 Height to top of hood	2197 mm	7 ft 2 in
4 Height to center of axle	685 mm	2 ft 3 in
5 Ground clearance	408 mm	1 ft 4 in
6 Overall length	7312 mm	24 ft 0 in
7 Length – rear axle to bumper	1920 mm	6 ft 4 in
8 Center line of front axle to hitch	1450 mm	4 ft 9 in
9 Wheelbase length	2900 mm	9 ft 6 in
10 Dump clearance at max lift and 45° dump	2806 mm	9 ft 2 in
11 Bucket clearance at max lift and level	3752 mm	12 ft 4 in
12 Bucket pin height at max lift	3872 mm	12 ft 8 in
13 Overall height – bucket raised	5145 mm	16 ft 11 in
14 Reach at max lift and 45° dump	1130 mm	3 ft 8 in
15 Rack back angle at max lift	60°	
16 Dump angle at max lift	54°	
17 Rack back angle at ground	44°	
18 Rack back angle at carry	47.8°	
19 Carry height	449 mm	1 ft 6 in
20 Digging depth	106 mm	4.2 in

For more complete information on Cat products, dealer services, and industry solutions, visit us on the web at www.cat.com

AEDQ0034-01 (01-2008)

© 2008 Caterpillar
All Rights Reserved
Printed in U.S.A.

Materials and specifications are subject to change without notice. Featured machines in photos may include additional equipment. See your Caterpillar dealer for available options.

CAT, CATERPILLAR, their respective logos, "Caterpillar Yellow," and the POWER EDGE trade dress, as well as corporate and product identity used herein, are trademarks of Caterpillar and may not be used without permission.

CATERPILLAR®