

# Cat<sup>®</sup> 914K

## COMPACT WHEEL LOADER



### FEATURES:

- **Cat<sup>®</sup> Optimized Z-bar Loader Linkage** – The Cat Optimized Z-bar Loader linkage combines the digging efficiency of a traditional Z-bar with tool carrier capabilities for great performance and versatility. With parallel lift and high tilt forces throughout the working range you can safely and confidently handle loads with precise control.
- **Work Tools** – The 914K features the Cat exclusive, Performance Series Buckets, as well as high visibility pallet forks and other attachment options. These tools enhance productivity and are available with an Integrated Toolcarrier (IT) coupler.
- **Hydraulics and Controls** – State of the art electro-hydraulic system provides low effort, fine control with fast cycle times. All-in-one joystick helps keep eyes on the work. Operator can adjust machine responsiveness with the push of a button, which allows the operator to set up the machine exactly the way they want it based on the application.
- **Tuned Drivetrain** – Smooth shifting and powerful acceleration is matched with modulated hydrostatic braking in the inching/braking pedal, creating a rhythm for material moving. Operator tunes between smooth or aggressive shifting with the push of a button.
- **Cab** – All around visibility is further enhanced with the availability of a rearview camera. The deluxe cab ensures operator comfort with a comfortable seat and easy to use controls in comfort of air conditioning. Available features such as Implement and Hystat Aggressiveness, Lift and Tilt Kickouts allow the operator to customize the machine via a soft touch keypad.
- **Serviceability** – Extended service intervals and excellent service access make daily checks quick and easy allowing you to get to work sooner.
- **Efficiently Powerful** with its high full turn tipping loads, powerful breakout forces and increased engine power the K Series delivers a balanced solution for all customer applications.
- **Fuel Savings Features** such as Eco Mode and an On Demand Cooling Fan make the 914K both powerful and fuel efficient.

## Specifications

### Engine

Engine Model	Cat C4.4	
Maximum Gross Power:		
Maximum Engine Speed	2,350 RPM	
SAE J1995	76 kW	102 hp
ISO 14396	75 kW	100 hp
ISO 14396 (DIN)	75 kW	102 hp
Rated Net Power:		
Rated Engine Speed	2,200 RPM	
SAE J1349	73 kW	98 hp
ISO 9249	74 kW	99 hp
ISO 9249 (DIN)	74 kW	101 hp
Displacement	4.4 L	268 in <sup>3</sup>
Bore	105 mm	4.13 in
Stroke	127 mm	5.00 in

### Engine (continued)

Maximum Gross Torque:		
SAE J1995	415 N·m	306 lbf·ft
ISO 14396	410 N·m	302 lbf·ft
Maximum Net Torque:		
SAE J1349	400 N·m	295 lbf·ft
ISO 9249	405 N·m	299 lbf·ft

- Engine meets Brazil MAR-1 emission standards, equivalent to U.S. EPA Tier 3/EU Stage IIIA.
- Net power advertised is the power available at the flywheel plus front drive implement pump when the engine is equipped with fan, air cleaner, muffler and alternator.



# 914K Compact Wheel Loader

## Buckets

Bucket Capacities:		
General Purpose	1.6-1.9 m <sup>3</sup>	2.1-2.5 yd <sup>3</sup>
Light Material	2.5-3.5 m <sup>3</sup>	3.2-4.6 yd <sup>3</sup>

## Steering

Steering Articulation Angle (each direction)	40 degrees	
Maximum Flow – Steering Pump	82 L/min	22 gal/min
Maximum Working Pressure – Steering Pump	22 500 kPa	3,263 psi
Steering Cycle Times – Lock to Lock:		
At 2,350 RPM	2.8 seconds	
Number of Steering Wheel Turns – Lock to Lock	3.75 turns	

## Loader Hydraulic System

Maximum Flow – Implement Pump	148 L/min	39 gal/min
3rd Function, Maximum Flow (standard flow)	90 L/min	24 gal/min
Maximum Working Pressure – Implement Pump	28 000 kPa	4,061 psi
Relief Pressure – Tilt Cylinder	34 000 kPa	4,931 psi
3rd Function Maximum Working Pressure	21 000 kPa	3,046 psi

### Hydraulic Cycle Times (maximum engine speed):

Raise (ground level to maximum lift)	5.2 seconds	
Dump (at maximum reach)	1.4 seconds	
Rack Back	2.2 seconds	
Float Down (maximum lift to ground level)	3.7 seconds	
Total Cycle Time	12.5 seconds	

## Service Refill Capacities

Fuel Tank	154.0 L	40.7 gal
Cooling System	21.5 L	5.7 gal
Engine Crankcase	9.0 L	2.4 gal

### Axles:

Front Center Differential	7.5 L	2.0 gal
Rear Center Differential	7.5 L	2.0 gal
Hydraulic System (including tank)	98.0 L	25.9 gal
Hydraulic Tank	55.0 L	14.5 gal
Transmission	3.4 L	0.9 gal

## Transmission

Forward and Reverse:		
Low Range, Speed Range 1*	10 km/h	6.3 mph
Low Range, Speed Range 2*	20 km/h	12.5 mph

\*Creeper Control allows speed control from a stand still up to 10 km/h (6.3 mph). The Creeper Control will only work in Range 1.

## Tires

Standard Size	17.5-25, 16 PR (L-3)	
Other Choices Include:	17.5-25 12 PR (L-2), 1 PC Rim	
	17.5-25 12 PR (L-3), 1 PC Rim	
	17.5R-25, Radial (L-3), 1 or 3 PC Rim	

- Tire options may vary by region. Contact your Cat dealer for details.
- In certain applications, the loader's productive capabilities may exceed the tire's tonnes-km/h (ton-mph) capabilities.
- Caterpillar recommends that you consult a tire supplier to evaluate all conditions before selecting a tire model.

## Cab

ROPS	ISO 3471:2008
FOPS	ISO 3449:2005 Level II

- Cab and Rollover Protective Structures (ROPS) are standard.
- The declared dynamic operator sound pressure levels per ISO 6396:2008\*, when properly installed and maintained, is 77 dB(A).
- The labelled sound power level for the CE marked configurations when measured according to the test procedure and conditions specified in 2000/14/EC is 103 dB(A).

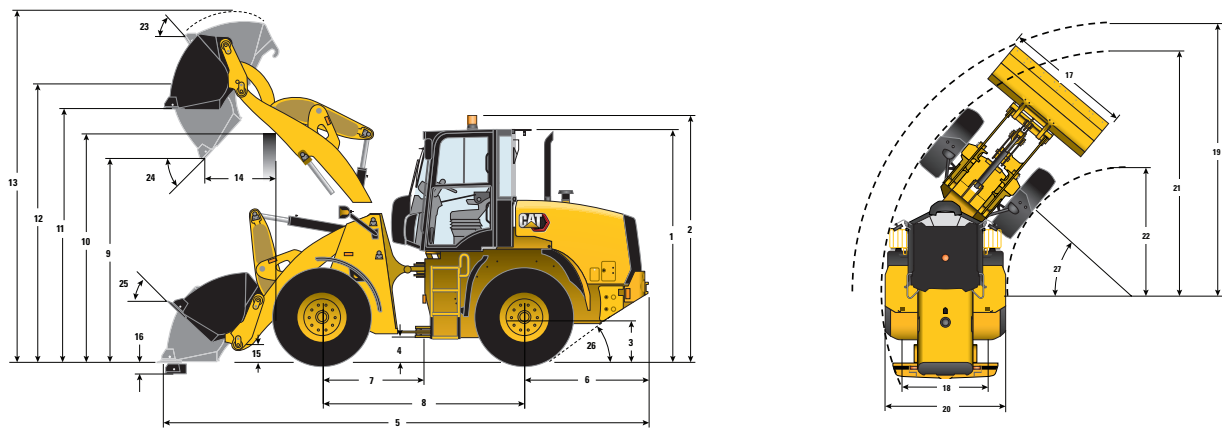
\*The measurements were conducted with the cab doors and windows closed.

## Axles

Front	Fixed
	Locking differential (standard)
Rear	Oscillating ±11 degrees
	Locking differential (standard)

# 914K Compact Wheel Loader

## Dimensions and Operating Specifications (All dimensions are approximate. Dimensions vary with bucket and tire choice.)



\*Vary with bucket. \*\*Vary with tire.

	Standard Lift – IT		Standard Lift – PO	
** 1 Height: Ground to Cab	3050 mm	10'0"	3050 mm	10'0"
** 2 Height: Ground to Beacon	3240 mm	10'7"	3240 mm	10'7"
** 3 Height: Ground Axle Center	597 mm	1'11"	597 mm	1'11"
** 4 Height: Ground Clearance	362 mm	1'2"	362 mm	1'2"
* 5 Length: Overall	6438 mm	21'1"	6332 mm	20'9"
6 Length: Rear Axle to Bumper	1600 mm	5'3"	1600 mm	5'3"
7 Length: Hitch to Front Axle	1300 mm	4'3"	1300 mm	4'3"
8 Length: Wheel Base	2600 mm	8'6"	2600 mm	8'6"
* 9 Clearance: Bucket at 45 Degrees	2706 mm	8'10"	2777 mm	9'1"
** 10 Clearance: Load Over Height	3272 mm	10'8"	3272 mm	10'8"
** 11 Clearance: Level Bucket	3403 mm	11'1"	3404 mm	11'2"
** 12 Height: Bucket Pin	3658 mm	12'0"	3658 mm	12'0"
** 13 Height: Overall	4638 mm	15'2"	4578 mm	15'0"
* 14 Reach: Bucket at 45 Degrees	860 mm	2'9"	782 mm	2'6"
15 Carry Height: Bucket Pin	283 mm	0'11"	283 mm	0'11"
** 16 Dig Depth	132 mm	0'5.2"	132 mm	0'5.2"
17 Width: Bucket	2401 mm	7'10"	2401 mm	7'10"
18 Width: Tread Center	1800 mm	5'10"	1800 mm	5'10"
19 Turning Radius: Over Bucket	5234 mm	17'2"	5202 mm	17'0"
20 Width: Over Tires	2410 mm	7'10"	2410 mm	7'10"
21 Turning Radius: Outside of Tires	4834 mm	15'10"	4834 mm	15'10"
22 Turning Radius: Inside of Tires	2584 mm	8'5"	2484 mm	8'5"
23 Rack Angle at Full Lift	57 degrees		57 degrees	
24 Dump Angle at Full Lift	48 degrees		48 degrees	
25 Rack Angle at Carry	41 degrees		41 degrees	
26 Departure Angle	33 degrees		33 degrees	
27 Articulation Angle	40 degrees		40 degrees	
*Tipping Load – Straight (ISO 14397-1)	6391 kg	14,086 lb	6787 kg	14,959 lb
*Tipping Load – Full Turn (ISO 14397-1)	5406 kg	11,915 lb	5765 kg	12,705 lb
*Breakout Force	7130 kg	15,714 lb	8022 kg	17,680 lb
*Operating Weight	8568 kg	18,884 lb	8364 kg	18,434 lb

Dimensions listed are for a machine configured with general purpose IT 1.6 m<sup>3</sup> (2.1 yd<sup>3</sup>) and Pin-On buckets (where stated), bolt-on cutting edges, standard counterweights, 80 kg (176 lb) operator, and 17.5-25, 16 PR (L-3) tires.

# 914K Compact Wheel Loader

## STANDARD EQUIPMENT

### POWER TRAIN

- Cat C4.4 mechanical engine
- Electric fuel pump with four micron filtration
- S-O-S<sup>SM</sup> port, transmission oil
- Hydrostatic transmission, 20 km/h (12.5 mph)
- Lubed for life universal joints
- Forward – Neutral – Reverse on joystick
- 100% locking differentials, while moving
- Brakes, service
  - Enclosed, wet-disc full hydraulic
- Brakes, parking (also secondary brake)
- Radiator, serviceable core, single plane
- Air cleaner, radial seal, dual filters
- Air inlet heater starting aid
- Cooling fan, hydraulic
- Radiator expansion tank
- Tires, 17.5-25, 16 PR (L-3)

### LOADER

- Parallel lift, Z-bar loader
- Ground access grease points

### HYDRAULICS

- Automatic lift kickouts
- Priority steering
- Hydraulics, two valve, one joystick
- Hydraulic diagnostic pressure taps
- S-O-S port, hydraulic oil
- Hydraulic oil cooler – single plane
- Hydraulically driven cooling fan
- Pump, variable displacement piston

### ELECTRICAL

- 80-ampere alternator
- One 850 CCA maintenance free battery
- Halogen flood lights (front and rear)
- Directional signals (front and rear)
- 12-volt direct electric starting
- Ignition key start/stop switch
- Switch, battery disconnect key
- Product Link™ ready wiring

### OPERATOR ENVIRONMENT

- ROPS/FOPS cab, pressurized and sound suppressed
- Hydraulic control lever lockout
- Gauges
  - Engine coolant temperature
  - Hydraulic oil temperature
  - Fuel level
  - Speedometer
  - Digital hour meter
- Operator warning system indicators:
  - Brake charge pressure low
  - Engine malfunction
  - Park brake applied
  - Electrical system voltage low
  - Hydraulic oil filter bypass
  - Action indicator
- Interior light
- Door

- Seat
  - Fabric only
  - Adjustable height, backrest, armrest
  - Seat belt, retractable 51 mm (2 in)
- Heater/defroster
- Wiper/washer front (intermittent)
- Wiper/washer rear
- Tinted front glass, laminated
- Adjustable steering column
- Rearview mirrors, exterior (two)
- Ground level door release

### FLUIDS

- Extended life coolant antifreeze, protected to –36° C (–33° F)
- Cat Advanced HYDO™ 10

### CHASSIS

- Fenders, front
- Engine enclosure – lockable
- Recovery hitch
- Vandalism protection – locked service points
- Counterweight

### REGIONAL STANDARDS (as required)

- Alarm, back-up alarm
- License plate mount
- Serial number, engine block stamp

## OPTIONAL EQUIPMENT

- Integrated Toolcarrier (IT), standard coupler
- Lights, roading, dip
- Lights, cab, working (four)
- Feature package, load
  - Return To Dig, Lift Kickout, Implement Modulation, Throttle Lock, Rimpull Control, Hystat Aggressiveness
- Feature package, road
  - Ride Control, Implement Modulation, Throttle Lock, Rimpull Control, Hystat Aggressiveness, Creeper Control
- Feature package, load and road
  - Ride Control, Return to Dig, Lift Kickout, Implement Modulation, Throttle Lock, Rimpull Control, Hystat Aggressiveness, Creeper Control
- Seat belt, retractable 75 mm (3 in)
- Heater and air conditioner
- Security system, machine
- Year of manufacture plate
- Beacon, rotating
- Alarm, back-up
- Product Link
- License plate mount
- Tire Options
- Steering, secondary
- Seats (deluxe/premium/vinyl)
- 3rd function (auxiliary hydraulics)
- Battery, heavy duty
- Fenders, rear
- Rear view camera
- Radio
- Toolbox
- Rear blind
- Guards (lights, hitch, power train, driveshaft, crankcase)

NOTE: Not all features are available in all regions. See your Cat dealer for more information.



For more complete information on Cat products, dealer services, and industry solutions, visit us on the web at [www.cat.com](http://www.cat.com)

© 2020 Caterpillar  
All rights reserved

Materials and specifications are subject to change without notice. Featured machines in photos may include additional equipment. See your Cat dealer for available options.

CAT, CATERPILLAR, LET'S DO THE WORK, their respective logos, "Caterpillar Yellow," the "Power Edge" and Cat "Modern Hex" trade dress as well as corporate and product identity used herein, are trademarks of Caterpillar and may not be used without permission.

AEHQ8122-01 (03-2020)  
Replaces AEHQ8122  
(AME, ANZP, BRAZIL,  
Eurasia\*, LAXB, and SEA)

